

5M + 1 REVIEW

FACTORS	DETAILS
MAN	NO CHANGES
MACHINE	NO CHANGES
METHOD	NO CHANGES
MATERIAL	DEFORMED BLADE OF 515138500
MEASUREMENT	NO CHANGES
ENVIRONMENT	NO CHANGES

**KANEPACKAGE PHILIPPINE INC.**

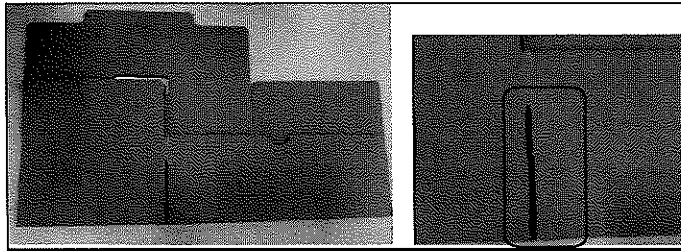
No. 5 Ring Road LISP II, Brgy. La Mesa, Cebu City, Laguna
Telephone No. (049) 545-7166 to 69
Fax No. (049) 545-6302

INVESTIGATION REPORT

DATE:	19-Oct-22	Prepared By:	Check By:	Approved By:
		C. Arevalo/ K.Diaz QA-IE/ Production IE	G. Magsino QA Supervisor	R. Miranda KPLIMA Gen. Operation Mgr.

I. PROBLEM DESCRIPTION**1.1. ISSUE:**

UNCUT

1.2. ITEM DESCRIPTION:**PART CODE:** 515138500**PART NAME:** ACCESSORIES BOX**1.3. BACKGROUND:**

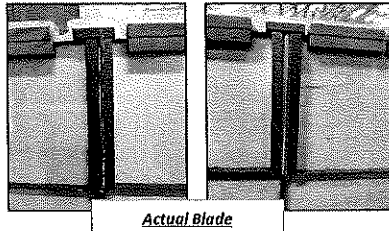
> Inhouse Detection : Scratches
> Lot size: 198pcs
> Reject Qty: 59pcs
> Rejection Rate: 29.80%
> JO#: 022910
Remarks: Uncut occurred on the flap side

II. IMMEDIATE ACTION

ACTION ITEMS	Target Date:	Person In-charge

III. WHY WHY ANALYSIS DETAILS:**DIRECT CAUSE:**

- WHY 1: Uncut occurred on the flap side of the item.
WHY 2: There is a scrap between the blade that might lead to uncut.
WHY 3: The ejector between the blade has a gap and the scrap was left behind on that gap.
WHY 4: When the scrap was left behind on that gap it creates to deformed the blade.
> The scrap stuck on the ejector.

*Actual Blade***IV. CORRECTIVE ACTION:****DIRECT CAUSE:**

1. The tooling custodian removed the ejector and closed the narrow gap in the blade and put loctite and changing new ejector.